

TENNIS FLOORS

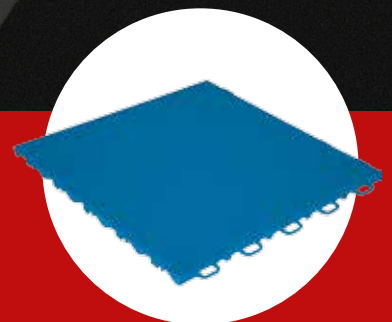


gripper

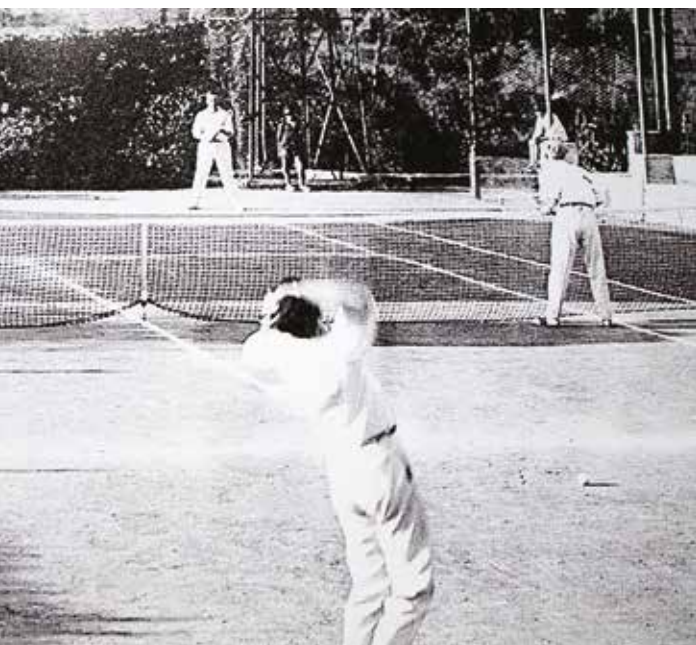
tennis



- QUICKNESS
- VERSATILITY
- NO MAINTENANCE



GRIPPER TENNIS THE REVOLUTION



WE ADAPT THE SPEED TO THE NEEDS OF OUR TIME!
TODAY IN THE APT CIRCUIT 75% OF THE POINTS IS PLAYED ON FAST SURFACES

Today's and tomorrow's champions need to train regularly on these types of surfaces: **GRIPPER TENNIS** is the answer!
With its classification index **ITF 5**, **GRIPPER TENNIS** makes easier a dynamic and fast game and the development of the necessary features to stand out in modern tennis.

The excellent footwear grip and the high shock absorbing capacity make **GRIPPER TENNIS** the perfect playing surface suitable for players of all levels.





Thanks to its particular conformation, **GRIPPER TENNIS** has a high resistance to weathering.



GRIPPER TENNIS doesn't freeze, it dries quickly after rain and this allows to play outside for most of the year.

THE ADVANTAGES OF **GRIPPER TENNIS**

QUICKNESS

GRIPPER TENNIS is designed for a fast and fun game that can excite players of any level.

VERSATILITY

GRIPPER TENNIS can be layed fast and easily. It can be assembled on any flat surface without need of expensive preparation works and disposal of current material. Thus it is particularly suitable for temporary events.

NO MAINTENANCE

After being layed, **GRIPPER TENNIS** doesn't need any maintenance. In this way, it avoids both the periodic rebuilding of the fund and the continuous restorations that, for example, red soil requires.

CUSTOMIZE YOUR TENNIS COURT



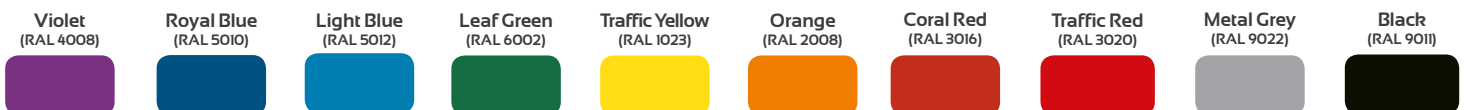
You can create your tennis court with different colors for outdoor and indoor playing areas, with writings of your own choice



The modularity and the possibility to purchase **GRIPPER TENNIS** in all RAL colors allow you to create great aesthetic effects



AVAILABLE COLORS*



CREATE YOU TENNIS COURT



ON RED SOIL



ON SYNTHETIC
GRASS



ON RESIN, CEMENT
OR MATECO



TENNIS WITH NO LIMITS



GRIPPER TENNIS allows players to develop the technical-tactics characteristics necessary to stand out in modern tennis



The easy installation of **GRIPPER TENNIS** makes it perfect for temporary event

TECHNICAL CHART



GRIPPER TENNIS consists of elements 12" x 12". It allows a fast and accurate creation of regulatory tennis courts, being able to differentiate the inside and outside of the playing area with different colors. **GRIPPER TENNIS** can be quickly and easily moved for temporary events.

SIZE 30,5 x 30,5 x H 1,2 cm
(10,75 pz./ m²)

WEIGHT 3,6 kg/m²

PP (Polypropylene)
UV stabilized

Modulus of elasticity in bending
1.100 N/mm²

MATERIAL

Breaking load to tensile stress
35 N/mm²

Coefficient of thermal expansion:
0,15 mm/m/°C

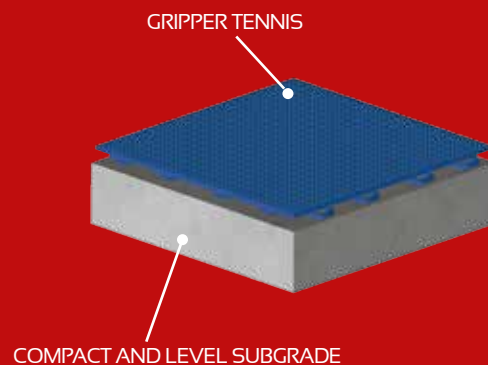
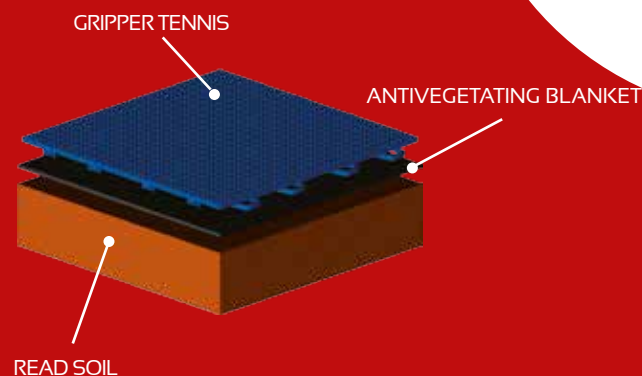
COUPLING fast with snap-fit

SURFACE FINISHING hollow

PACKAGING SIZE 100 x 120 x H 160 cm
140 m²

RESISTANCE TO PUNCHING 530 kN/m²

ADHERENCE Good (mean USRV value = 49)



LAYING PROCEDURES



1

BED PREPARATION

Cleaning and leveling of the surface



2

GRIPPER LAYING

Quick combination and coupling (snap-fit)



3

COURT DELIMITATION

Guidelines positioning with tape and realization of the lines with traffic paint. For temporary events use adhesive tape



4

ASSEMBLY OF THE EQUIPMENT

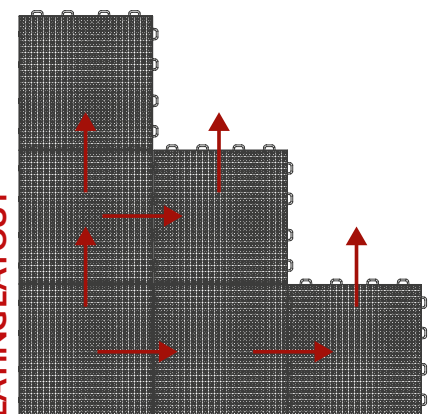
Place the equipment leaving a few centimeters of space around the perimeter and the supports to allow the natural thermal expansion in case of particularly hot days



ASSEMBLY IN JUST 4 HOURS!



LAYING LAYOUT





GEOPLAST S.p.A.

35010 Grantorto PD - Italia - Via Martiri della Libertà, 6/8
tel +39 049 9490289 - fax +39 049 9494028
e-mail: geoplast@geoplast.it - www.geoplast.it

